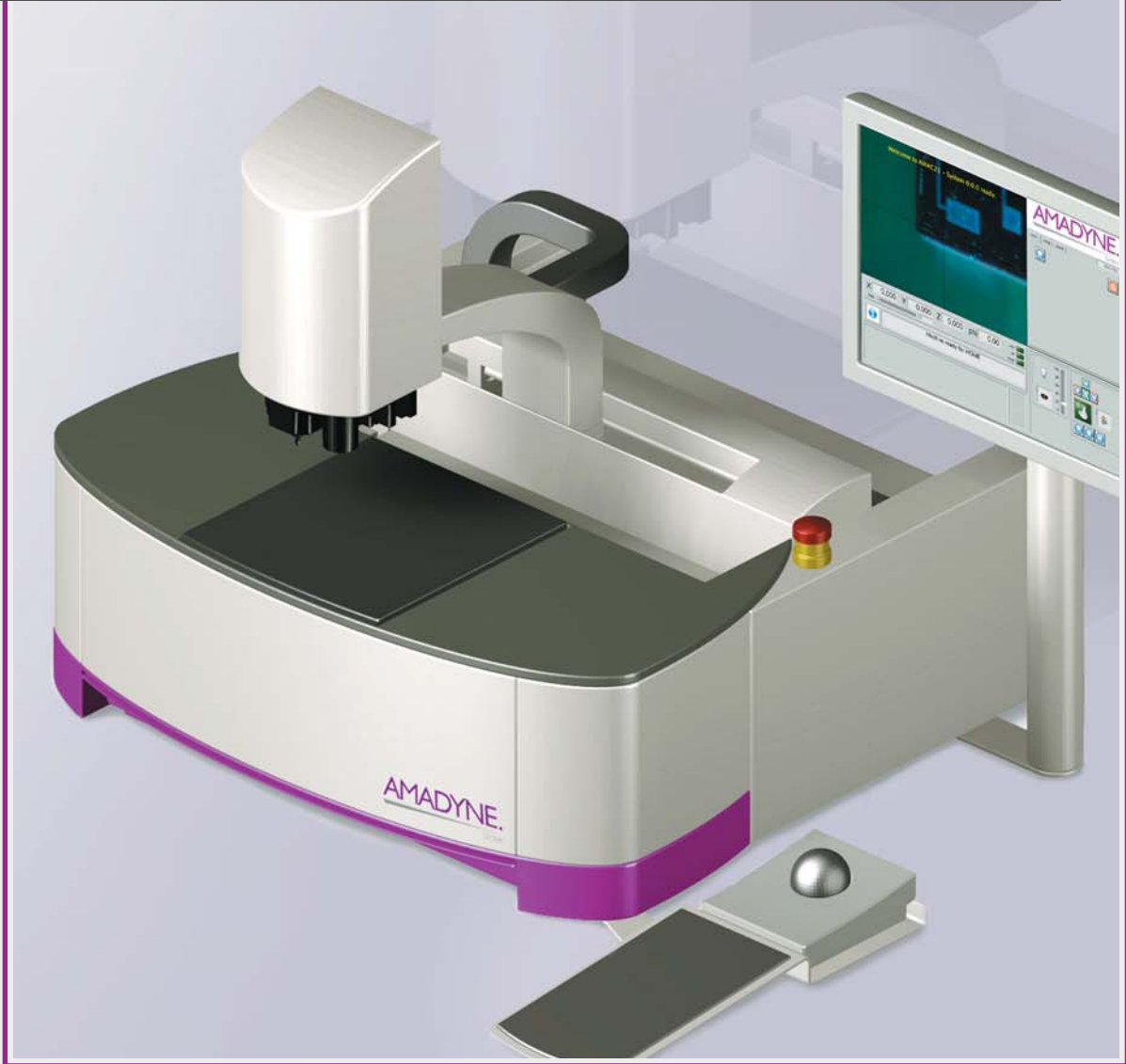


AMAC 21

Advanced Manual Assembly for Components

AMAC 21 is a manual component handling system. With an open and flexible design for manufacturing micro electronic and micro systems devices.

Pick and Place | Epoxysystems | FC Place | Eutectic



AMADYNE.

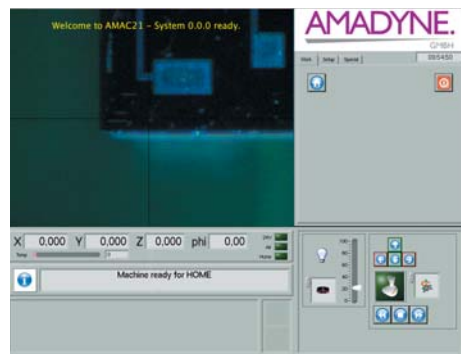
GMBH

AMAC21

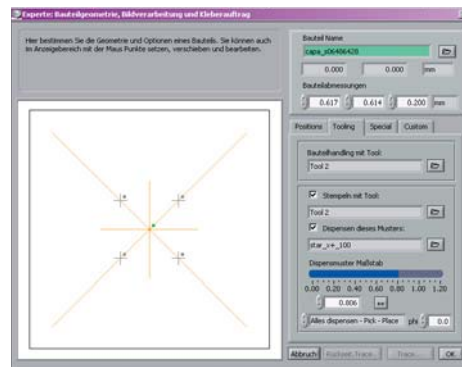
Keyfeatures

- Easiest manual operation with dialogue windows on the screen
- Free organization of the 225 x 200 mm working area in pickup and placement areas
- Compact table unit for customer specific products
- Automatic production in case of fix pick and place positions
- Component presentation in waffle pack and GEL PAK

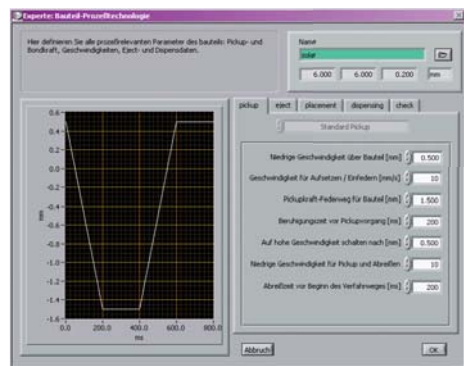
Software



Basic interface
fast, save operations with 4 segments, live video-, manipulation-, menu-, status segment



Component / epoxy
stamping and dispensing of pattern with assigned pattern library data



Process technology
clear arrangement of process parameters and graphical display of process

Hardware Options

Dispenser
free moveable writing time/pressure or rotary micro valve dispenser with extensive pattern library

Stamping unit
squeegee with selectable speed and adjustable epoxy film thickness

Uplooking camera
with coaxial - and ring light for final accuracy optimization prior to placement

Eutetic unit
for substrate sizes up to 25 mm and temperatures up to 450° C in inert gas atmosphere

Cartisian robot XYZφ
with integrated touchdown detection, 360° tool rotation, CCD camera, ring-, coaxial- and sidelight

